



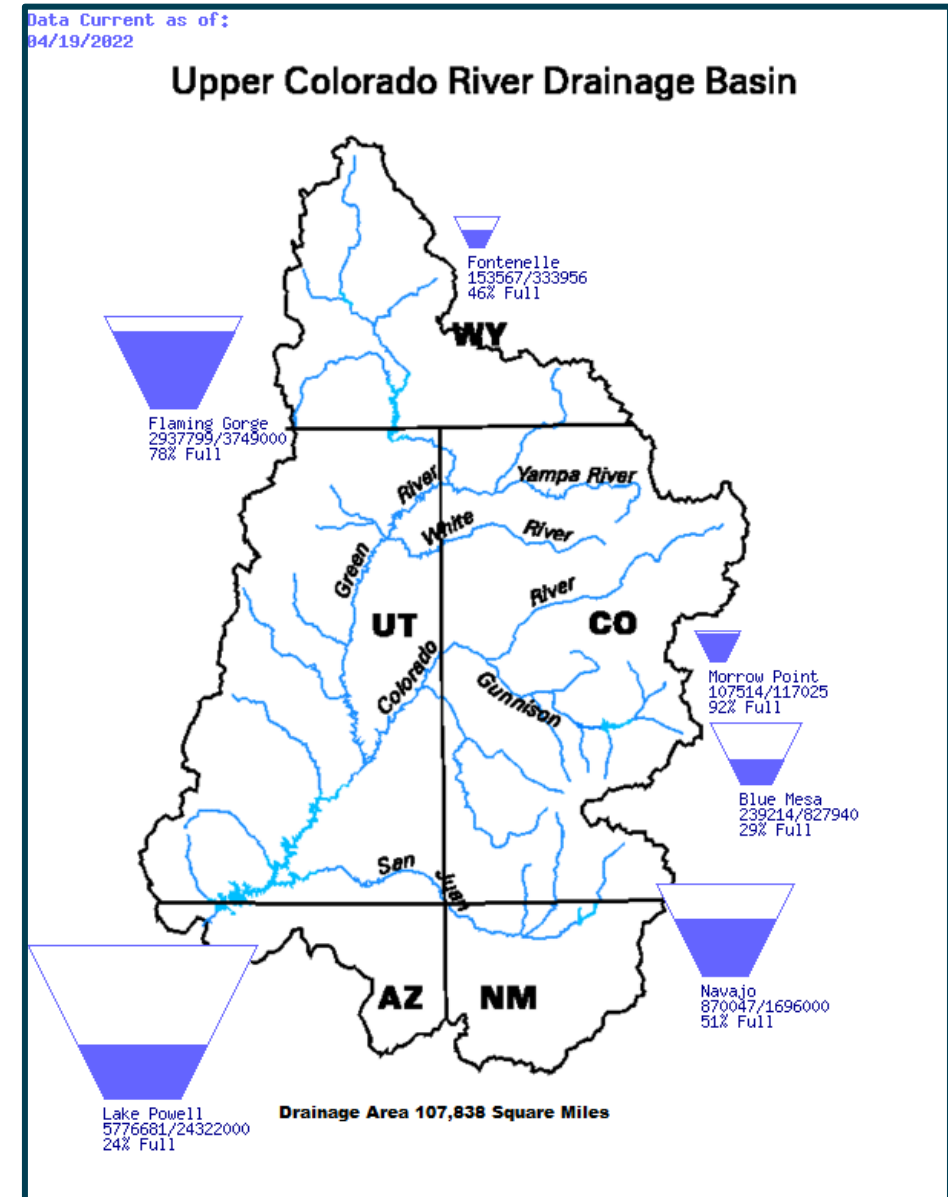
— BUREAU OF —
RECLAMATION

Colorado River Authority of Utah: Hydrology Update

Upper Colorado Basin Region
April 21, 2022

Upper Basin Storage (as of April 19, 2022)

Reservoir	Percent Current Live Storage	Current Live Storage (maf)	Live Storage Capacity (maf)	Elevation (feet)
Fontenelle	46	0.15	0.33	6,479.05
Flaming Gorge	78	2.93	3.75	6,018.81
Blue Mesa	29	0.24	0.83	7,436.19
Navajo	51	0.87	1.70	6,020.43
Lake Powell	24	5.78	24.32	3,522.54
UC System Storage	33	10.10	30.93	



Water Year Snowpack and Precipitation^{1,2} as of April 20, 2022

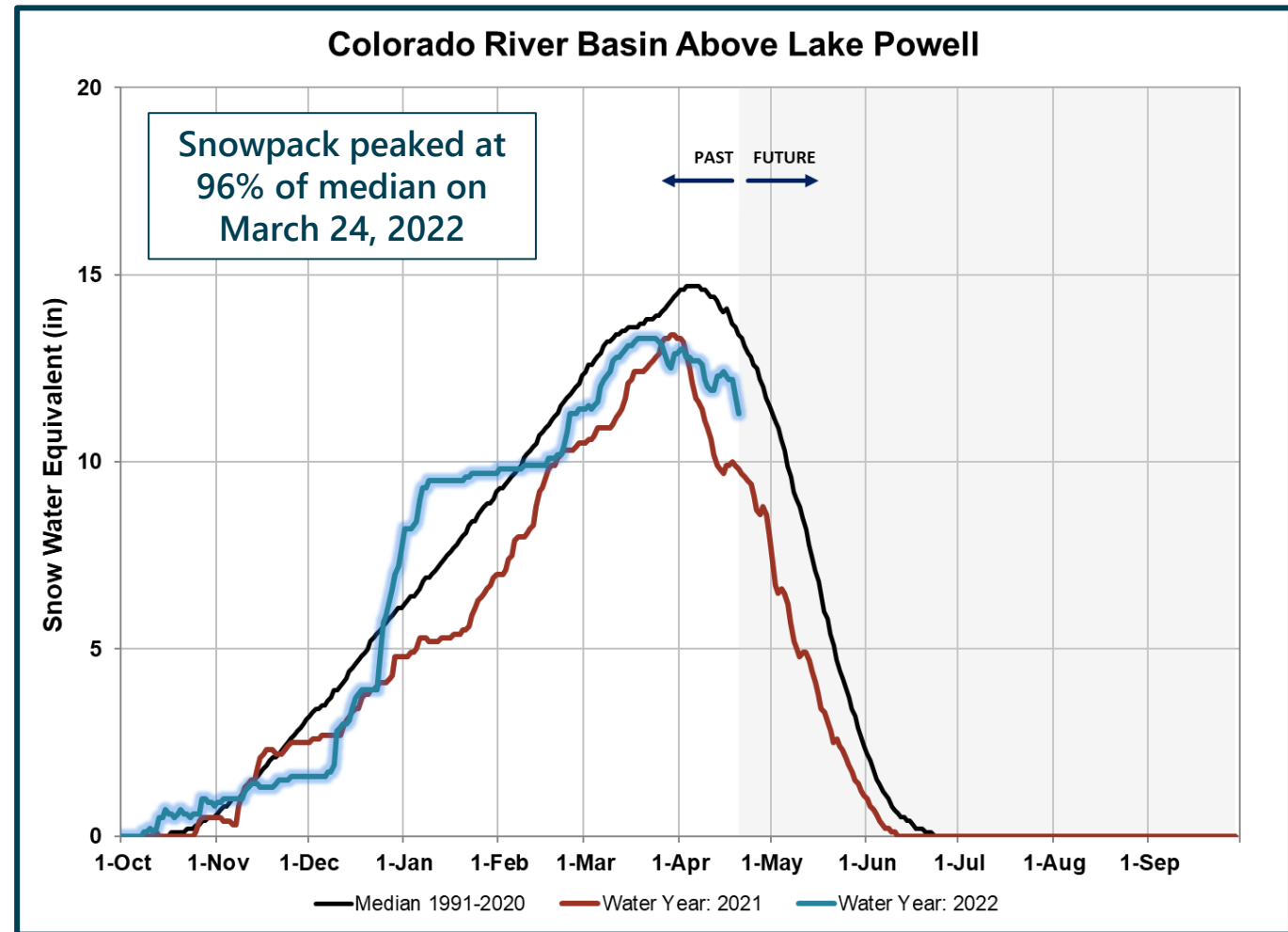
Colorado River Basin
above Lake Powell

Water Year 2022
Precipitation
(year-to-date)

96% of average

Current Snowpack

83% of median

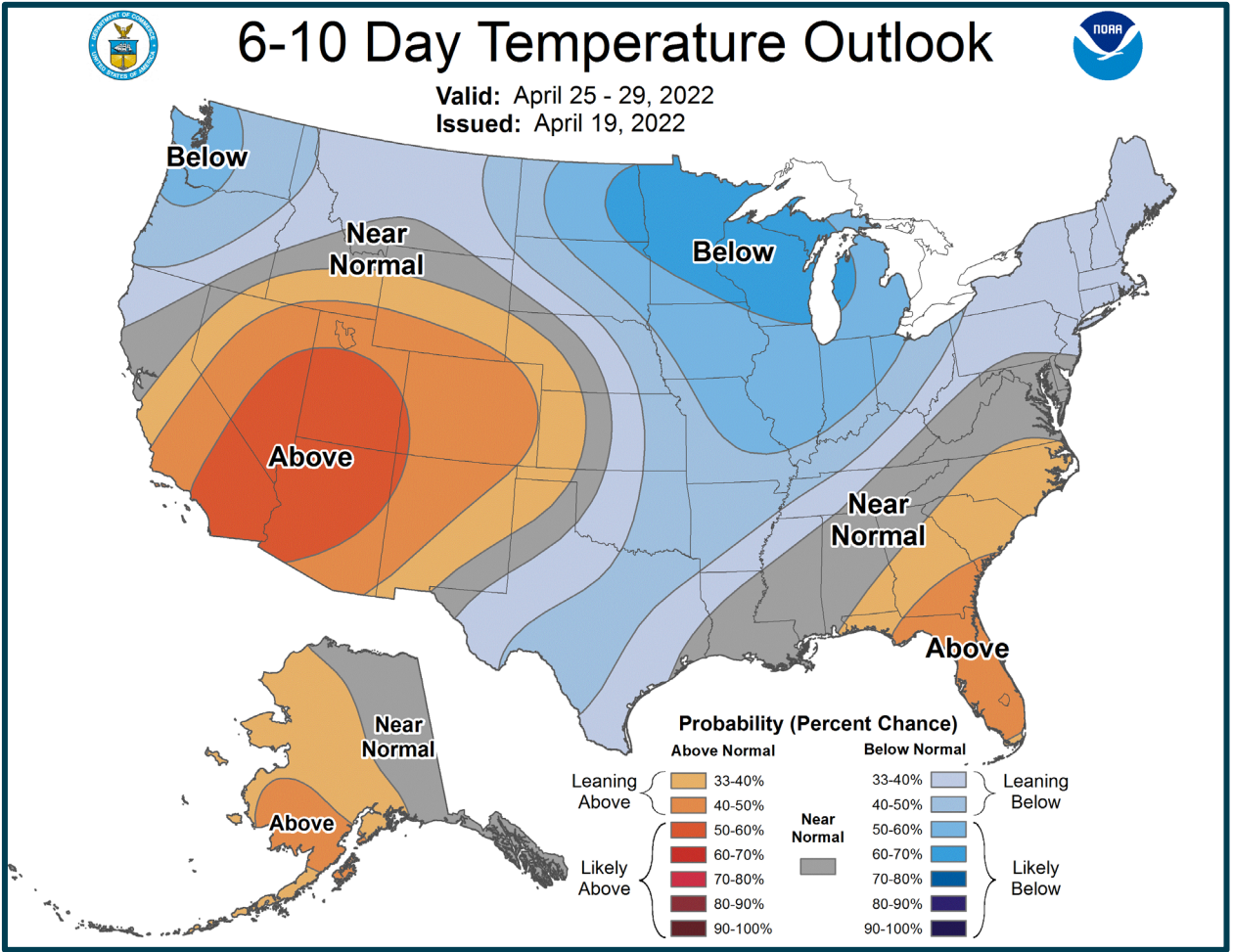
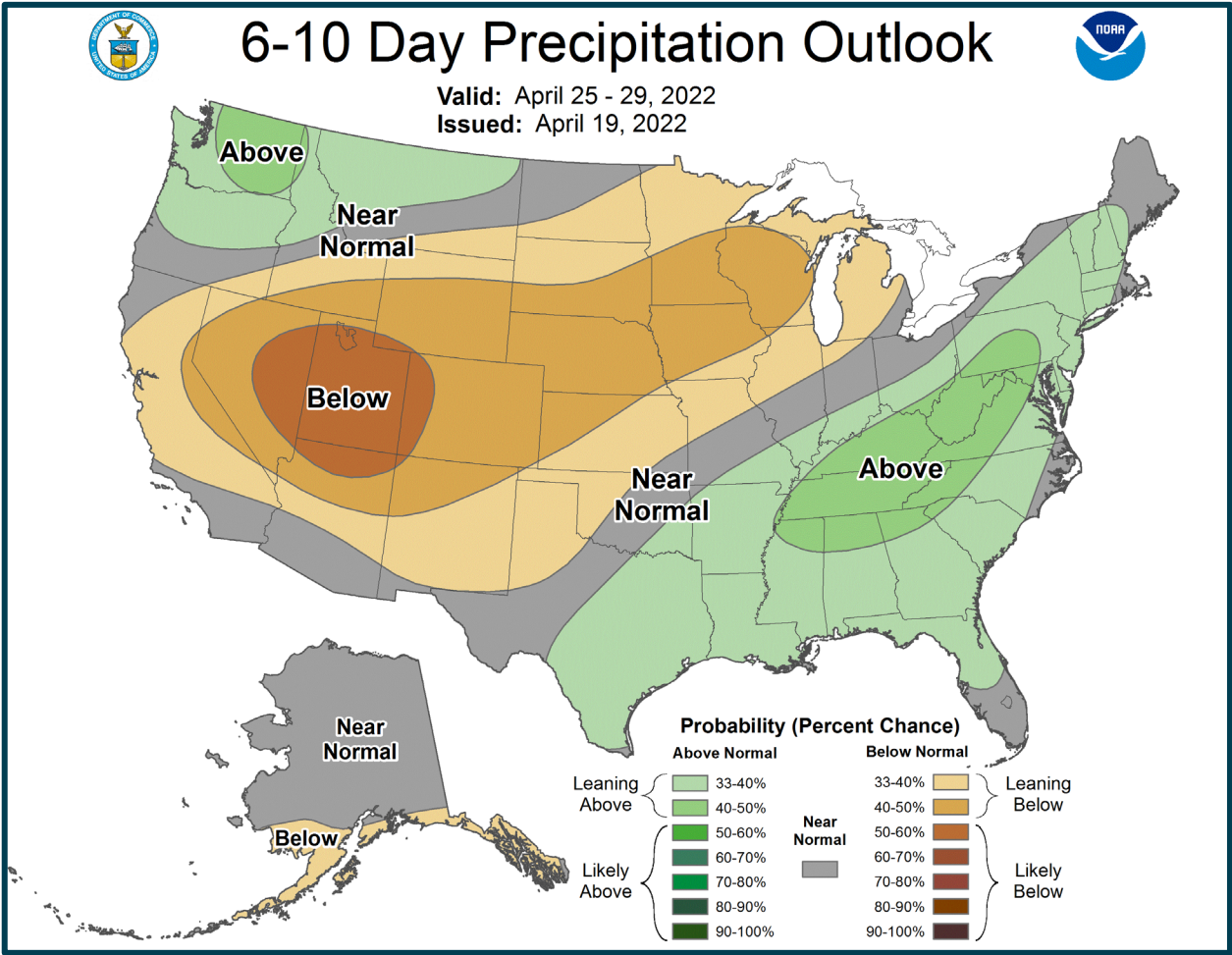


¹Percent of normal precipitation is based on an arithmetic mean, or average; percent of normal snowpack is based on the median value for a given date.

²Statistics are based on the 30-year period of record from 1991-2020.



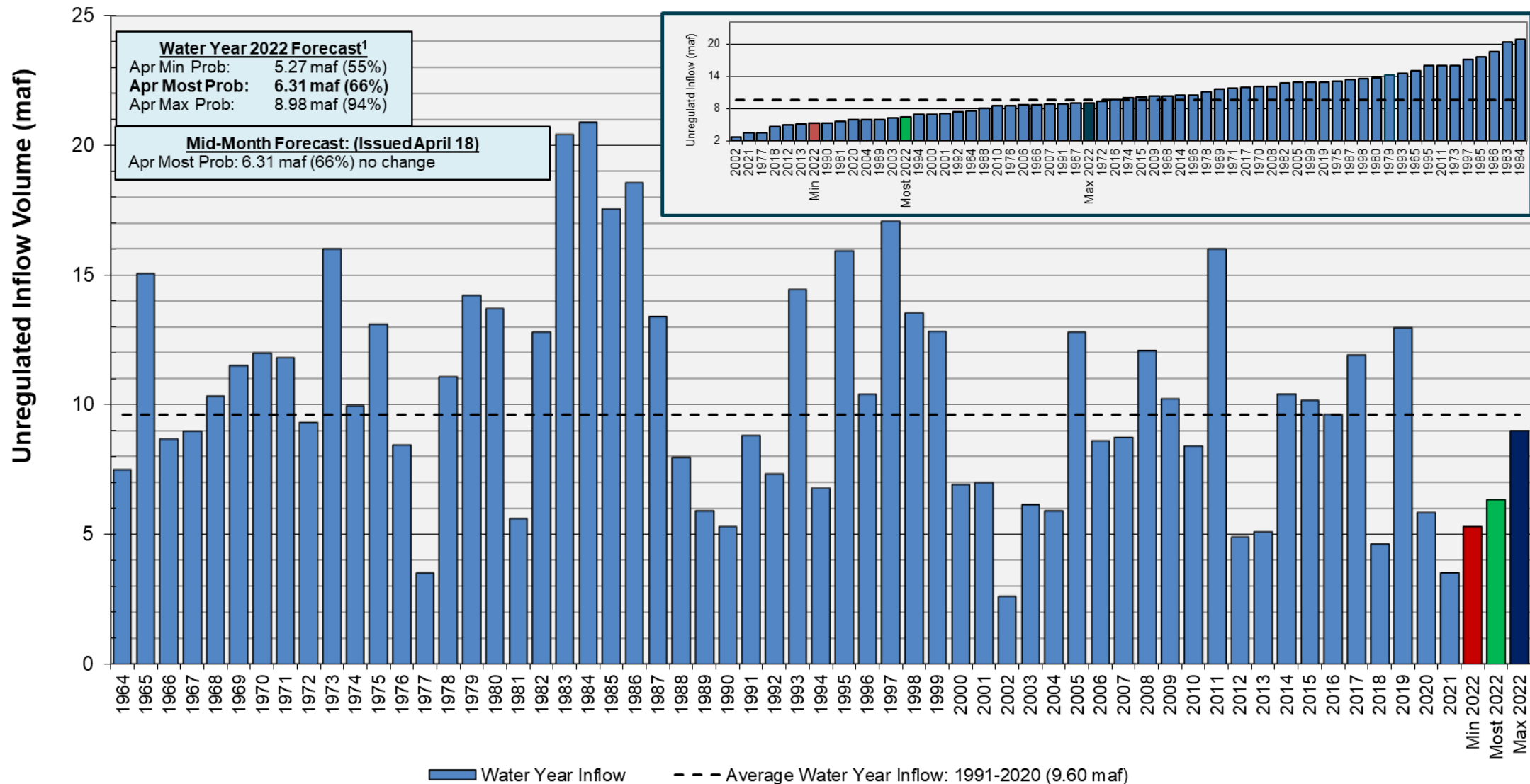
Precipitation and Temperature Outlook



Lake Powell Water Year Unregulated Inflow¹

Forecast as of April 18, 2022

Comparison with History



¹Water Year 2022 statistics are based on the 30-year period of record from 1991-2020.



Most Probable April Forecast Water Year 2022

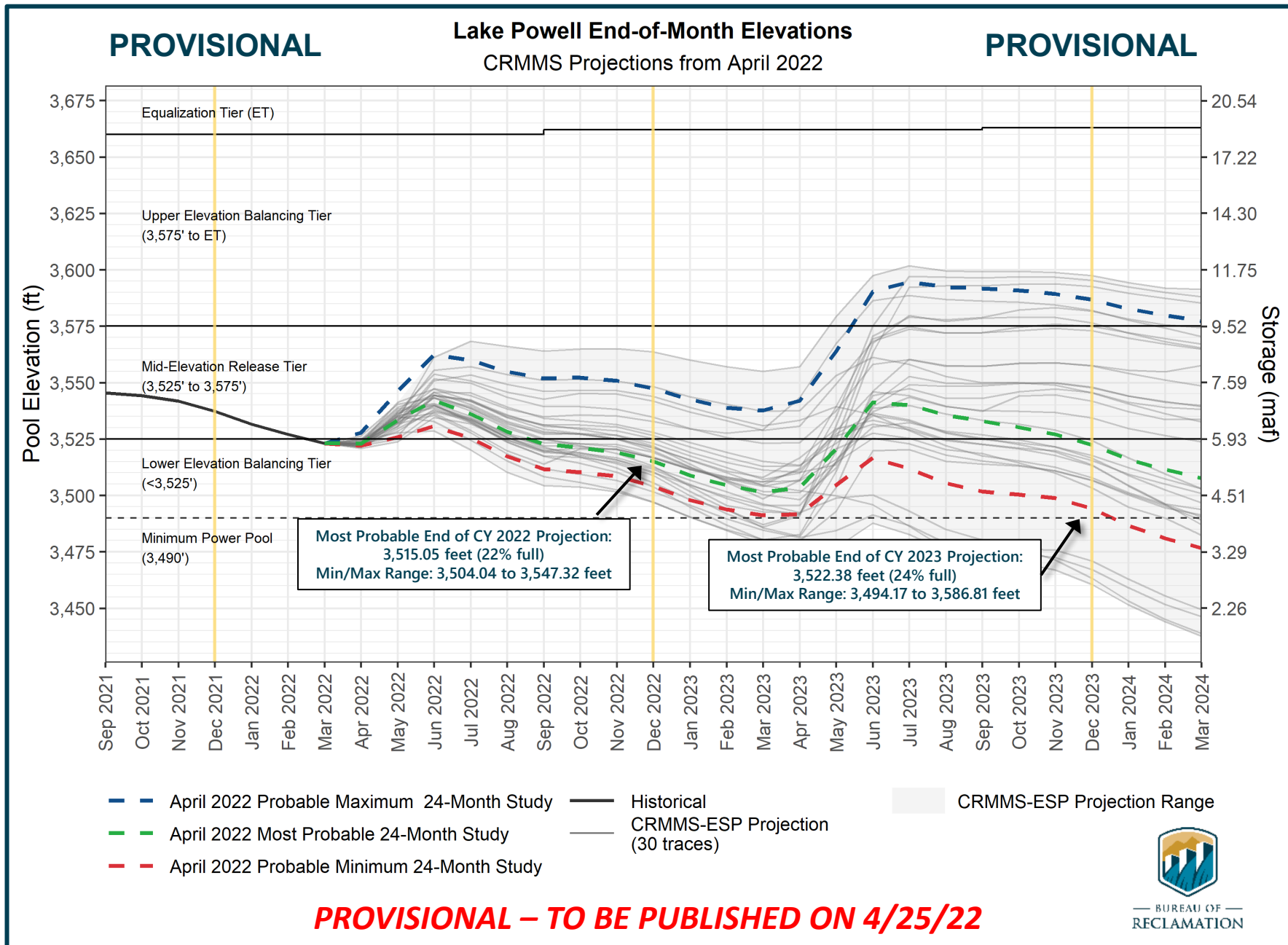
April – July 2022
Forecasted Unregulated Inflow
as of April 4, 2022

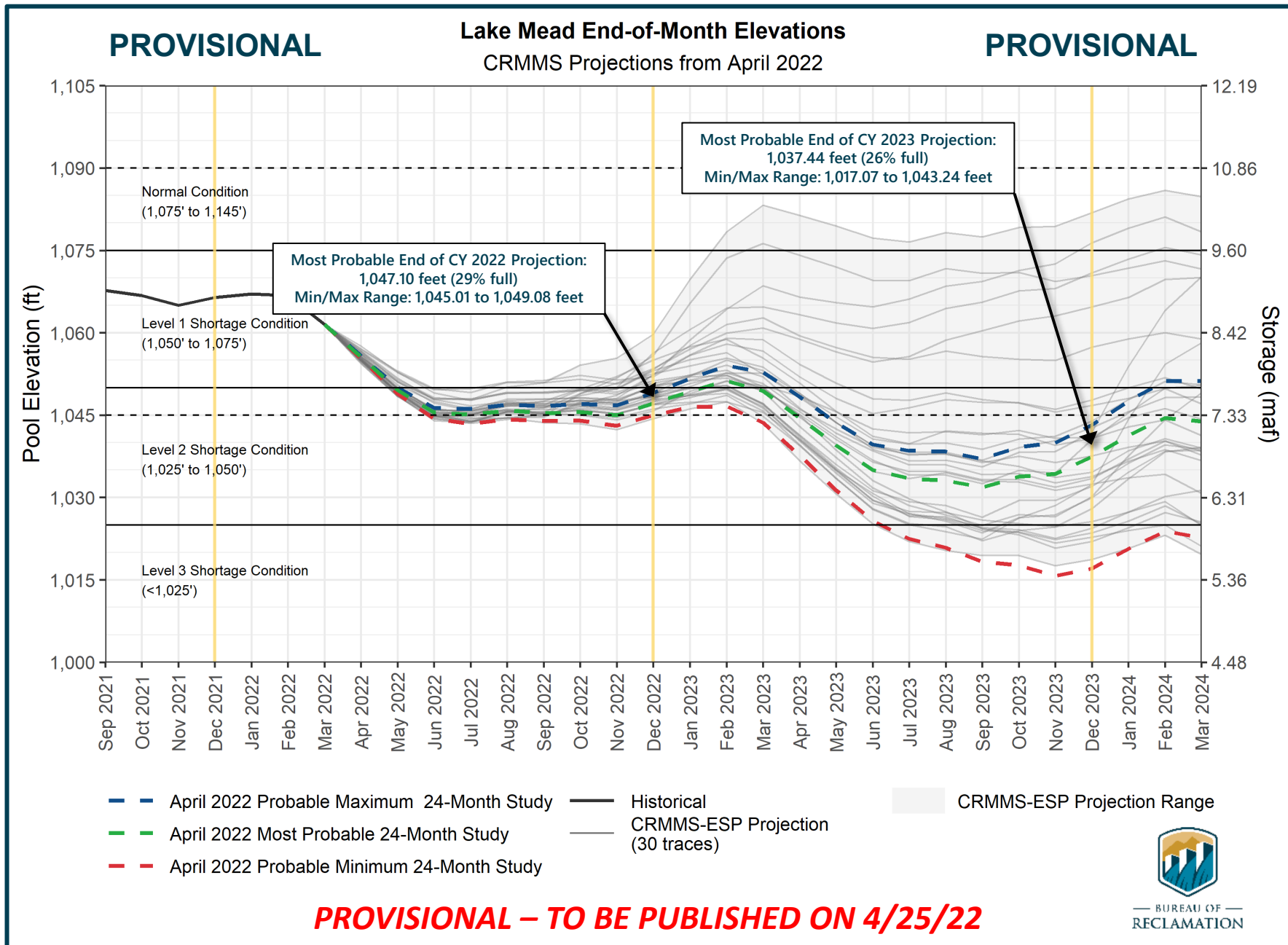
Reservoir	Unregulated Inflow (kaf)	Percent of Avg
Fontenelle	435	59
Flaming Gorge	520	54
Blue Mesa	530	83
Navajo	390	62
Powell	4,100	64

Water Year 2022
Forecasted Unregulated Inflow
as of April 5, 2022

Reservoir	Unregulated Inflow (kaf)	Percent of Avg
Fontenelle	712	66
Flaming Gorge	855	61
Blue Mesa	755	83
Navajo	555	61
Powell	6,310	66







Questions?



— BUREAU OF —
RECLAMATION