



ASO + M3 Works Modeling Report

Uinta Headwaters, UT

Model date: April 1, 2026



Historical data and reports can be found at:
data.airbornesnowobservatories.com

© Copyright 2026 Airborne Snow Observatories, Inc.

This report is copyrighted by Airborne Snow Observatories, Inc. for the limited, private, non-commercial use of our customers. Any other use of this report or any underlying data contained within the report without our consent is prohibited. Unless expressly granted, all rights are reserved.

By accessing, reviewing, or otherwise using this report or any data contained within it, you acknowledge and agree to be bound by the licensing terms under which you have been provided this report, including all obligations and restrictions contained therein.

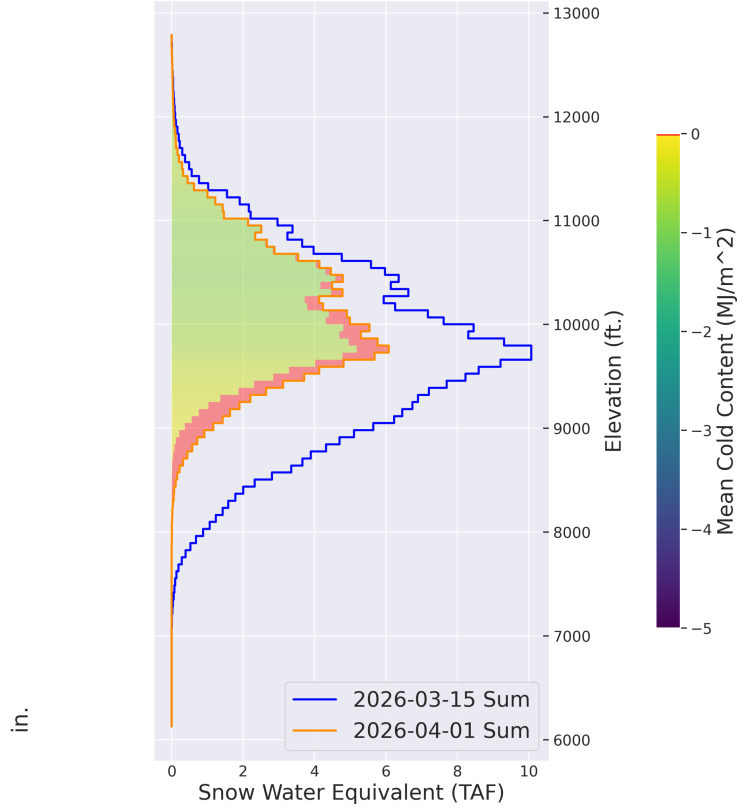
If you wish to use this report or any underlying data for any other reason, including for a for-profit purpose, please contact us directly at info@airbornesnowobservatories.com to inquire about licensing arrangements.

UINTA HEADWATERS, UT APRIL 1, 2026 MODELING REPORT

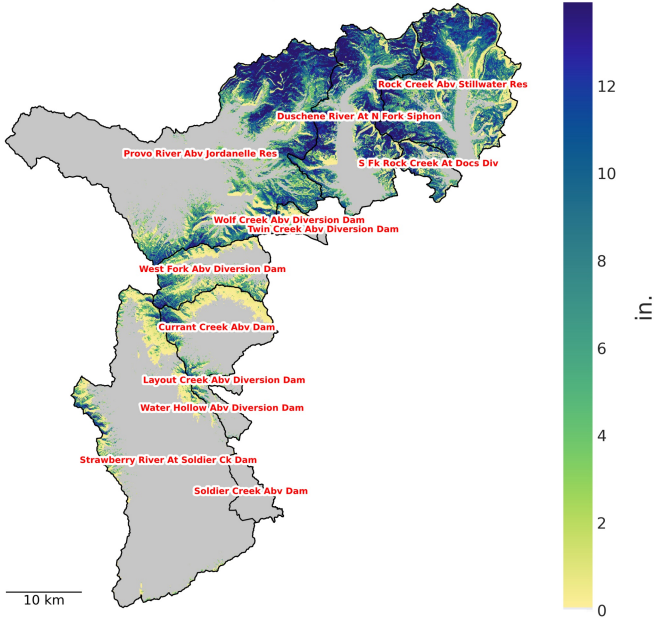
Current model date: April 01, 2026
Model Total Snow Water Equivalent: 123.6 TAF
Model Mean Snow Water Equivalent: 3.1 in.
Model Mean Cold Content: -0.4 MJ/m²

Model reporting period: Mar 15 - Apr 01, 2026
Change in Total Snow Water Equivalent: -130.3 TAF
Change in Mean Snow Water Equivalent: -3.3 in.
Accumulated Total Surface Water Input: 141.7 TAF
Accumulated Total Precipitation: 17.8 TAF
Change in Mean Cold Content: 1.9 MJ/m²

Total Snow Water Equivalent (TAF) by Elevation



Snow Water Equivalent (in.)



DESCRIPTION	TOTAL	CURRENT CREEK ABV DAM	DUSCHENE RIVER AT N FORK SIPHON	LAYOUT CREEK ABV DIVERSION DAM	PROVO RIVER ABV JORDANELLE RES	ROCK CREEK ABV STILLWATER RES	S FK ROCK CREEK AT DOCS DIV	SOLDIER CREEK ABV DAM	STRAWBERRY RIVER AT SOLDIER CK DAM
Mean SWE in.	3.1	1.1	6.3	1.1	3.4	6.6	5.1	0.0	0.3
Total SWE TAF	123.6	2.8	29.5	0.2	41.9	34.8	3.8	0.0	3.7

TWIN CREEK ABV DIVERSION DAM	WATER HOLLOW ABV DIVERSION DAM	WEST FORK ABV DIVERSION DAM	WOLF CREEK ABV DIVERSION DAM
0.1	0.9	2.6	2.5
0.0	0.4	5.2	1.3

The model has been updated with ASO survey data, a brief summary of the changes to the model are provided:
 March 11 - March 12 update summary: removed 3.7 TAF of Snow Water Equivalent

UINTA HEADWATERS, UT APRIL 1, 2026 MODELING REPORT

State of the Snowpack

Interpretation Notes

Elevation bands are in increments of 1000 ft, e.g., 4000 is 4000 - 5000 ft.

Mean SWE is calculated over the total basin area. Mean cold content is calculated over the snow covered area to reflect the ripeness of the existing snowpack.

Surface Water Input (SWI) includes liquid water leaving the bottom of the snowpack and rain on bare ground.

Forcing data is created with the Spatial Modeling for Resources Framework (SMRF) using the High Resolution Rapid Refresh (HRRR) output fields as inputs.

Model Results

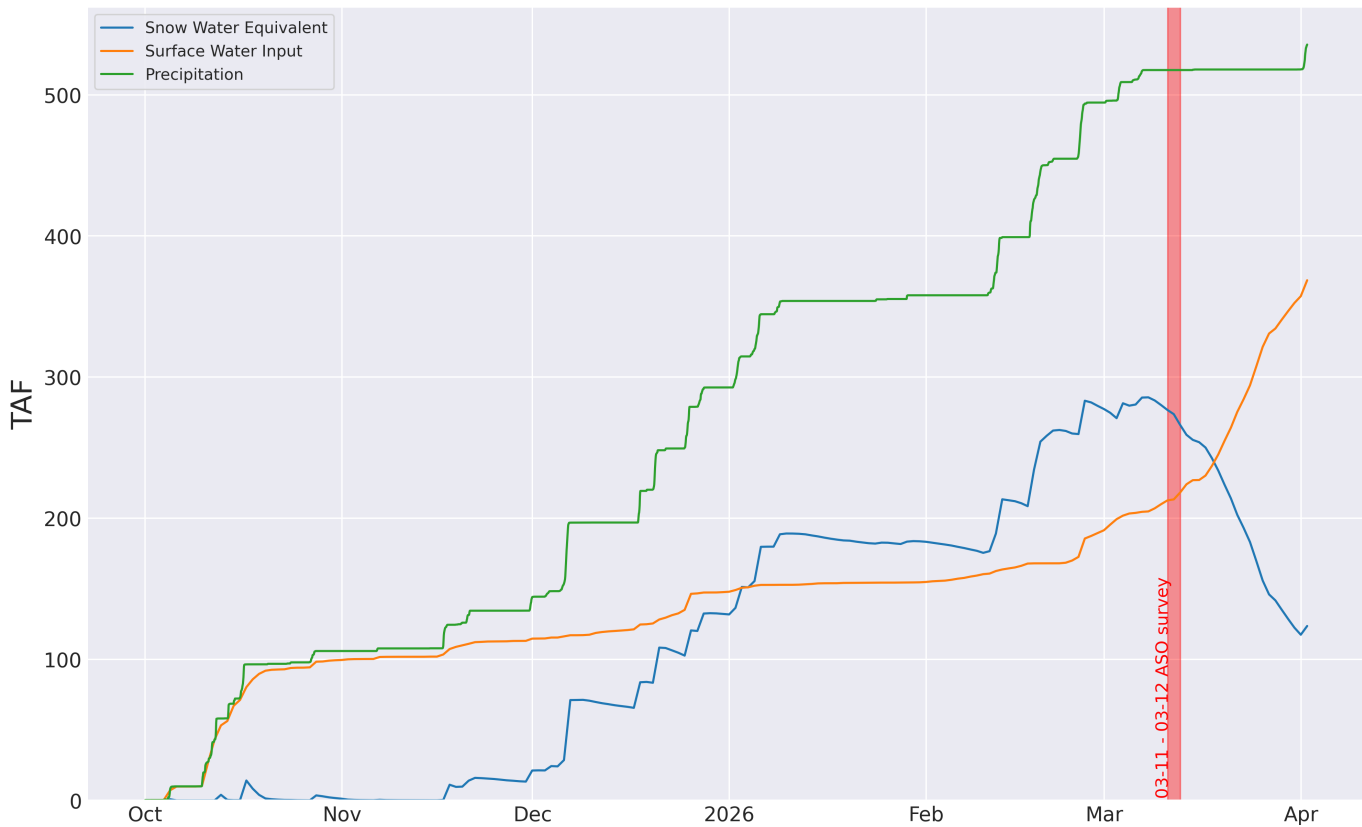


Fig.3 Water Year timeseries. Vertical lines indicate ASO survey dates.

Change in Snow Water Equivalent (in.)

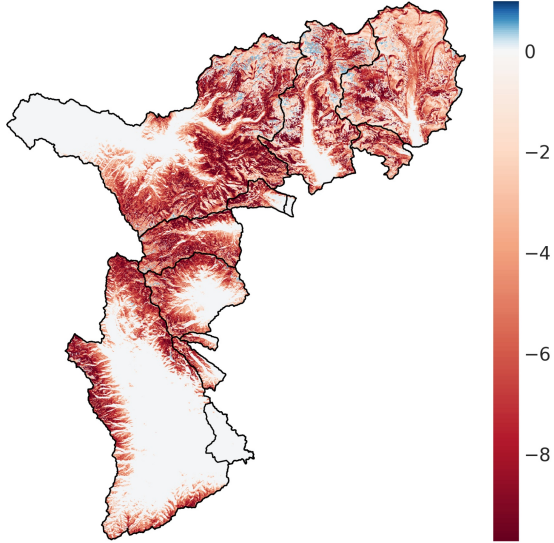
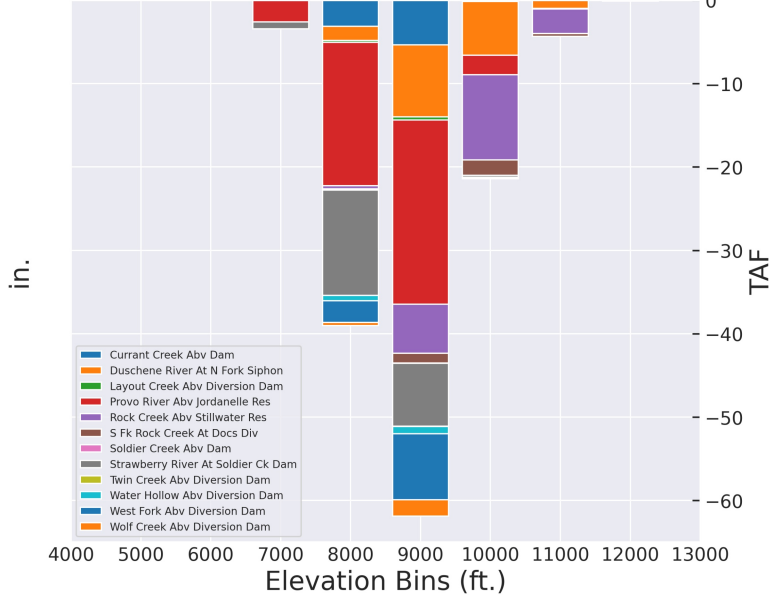


Fig.4 Change in Snow Water Equivalent from 2026-03-15 to 2026-04-01

Change in Total Snow Water Equivalent (TAF) per Elevation band



Snow Water Equivalent (in.)

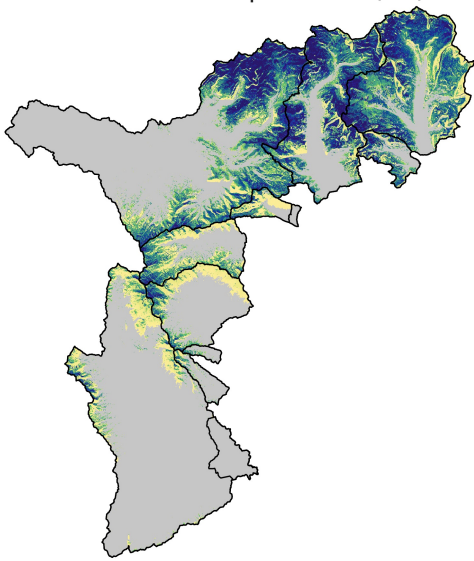
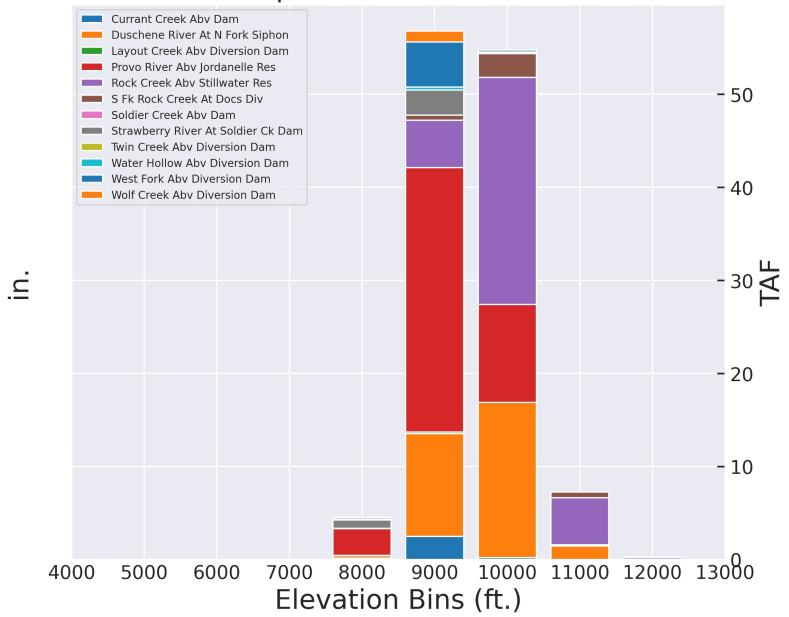


Fig.5 Snow Water Equivalent as of 2026-04-01

Total Snow Water Equivalent (TAF) per Elevation band



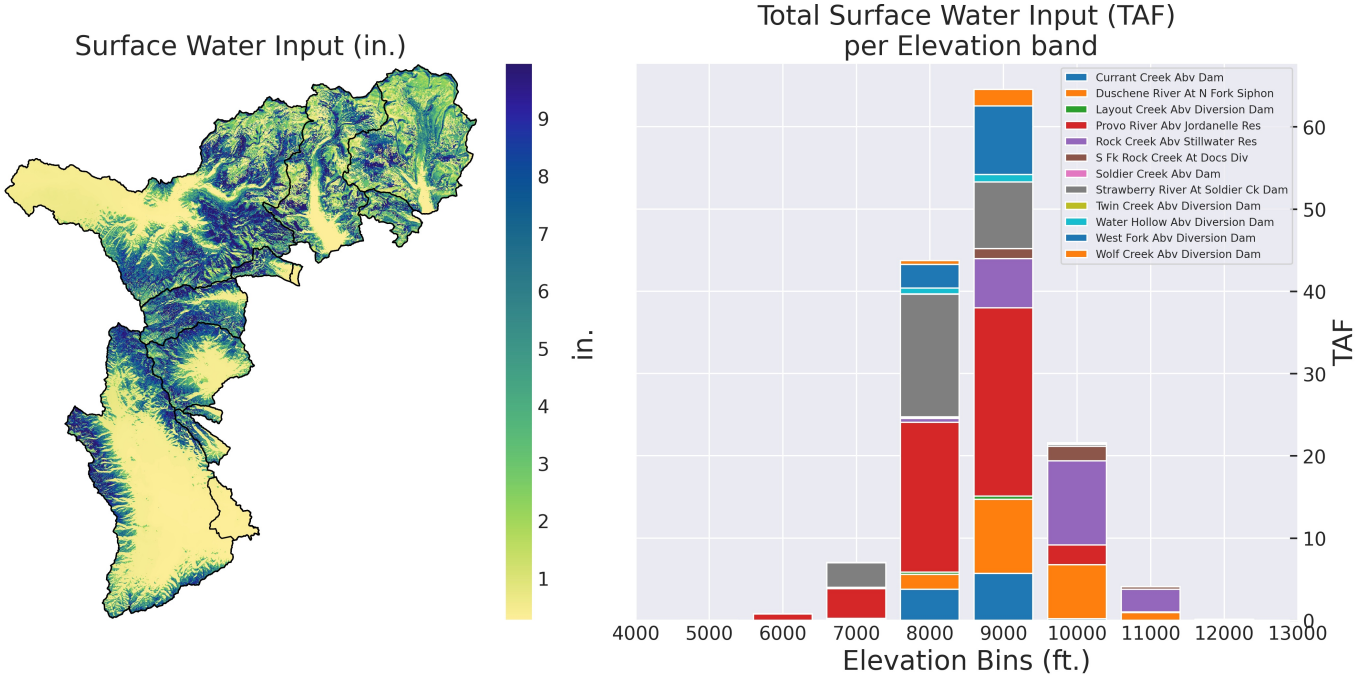


Fig.6 Accumulated Surface Water Input from 2026-03-15 to 2026-04-01

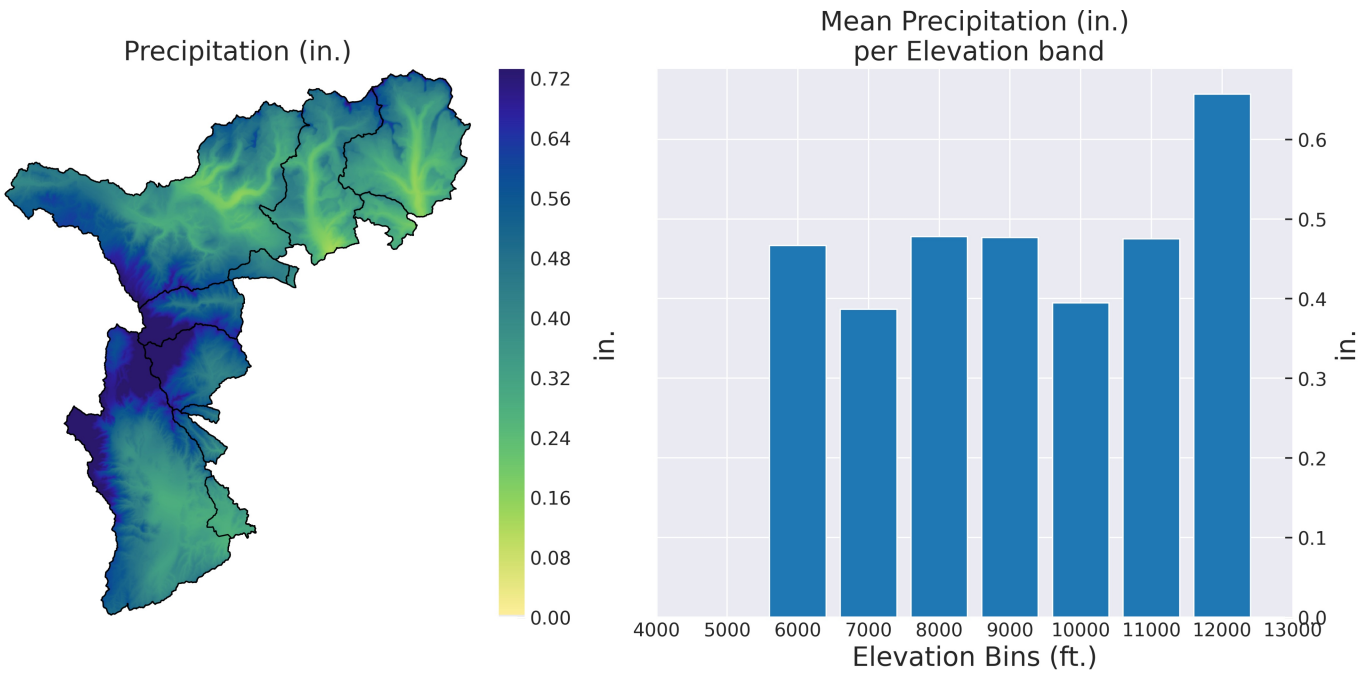


Fig.7 Accumulated Precipitation from 2026-03-15 to 2026-04-01. Precipitation fields are locally interpolated using SMRF with underlying data from HRRR.

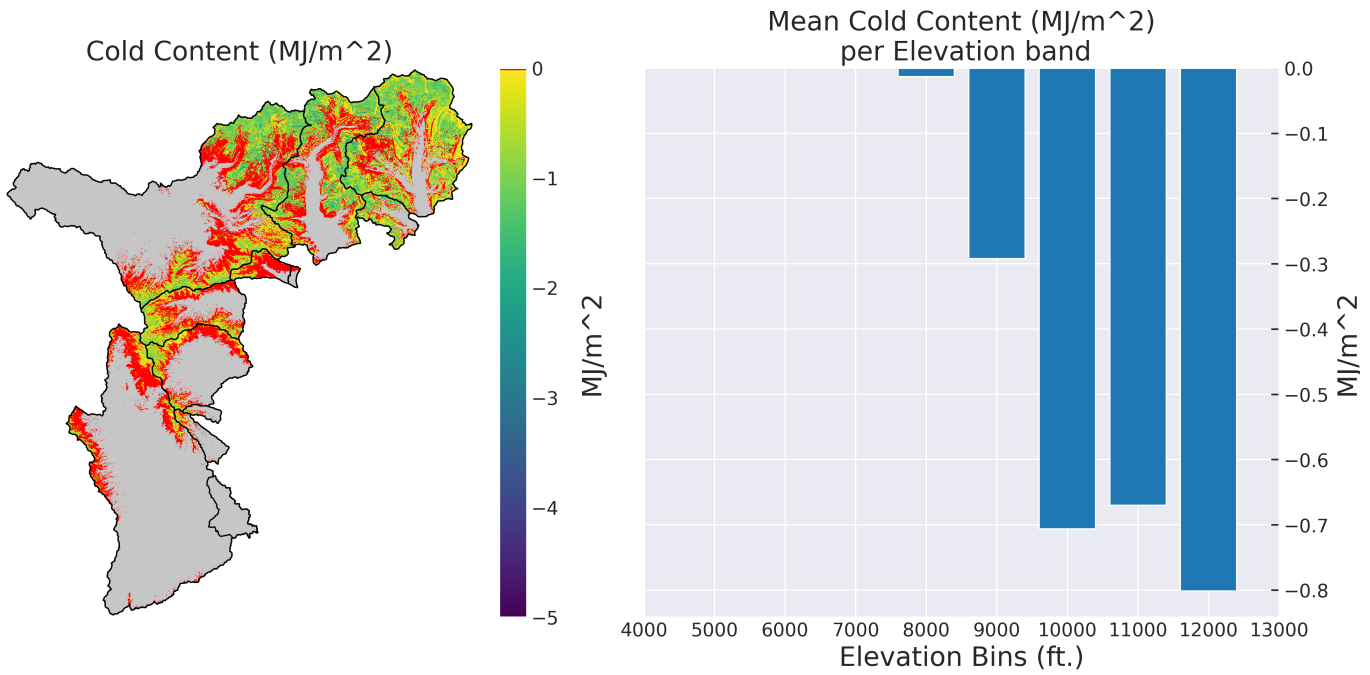


Fig.8 Cold Content as of 2026-04-01

The un-ripe snow represents approximately 85% of the basin SWE.

UINTA HEADWATERS, UT APRIL 1, 2026 MODELING REPORT

Model to station comparisons are a comparison of 50 meter cells to a point within the basin. Some differences are expected when comparing modeled and measured snowpack behavior at these different spatial scales. ASO 3m snow depth measurements at each station are indicated by the red '+' symbols. Absence of these symbols indicates that the station location or data quality are suspect, and they were not used in the ASO survey validation and report.

Station compare Snow Depth (in.)

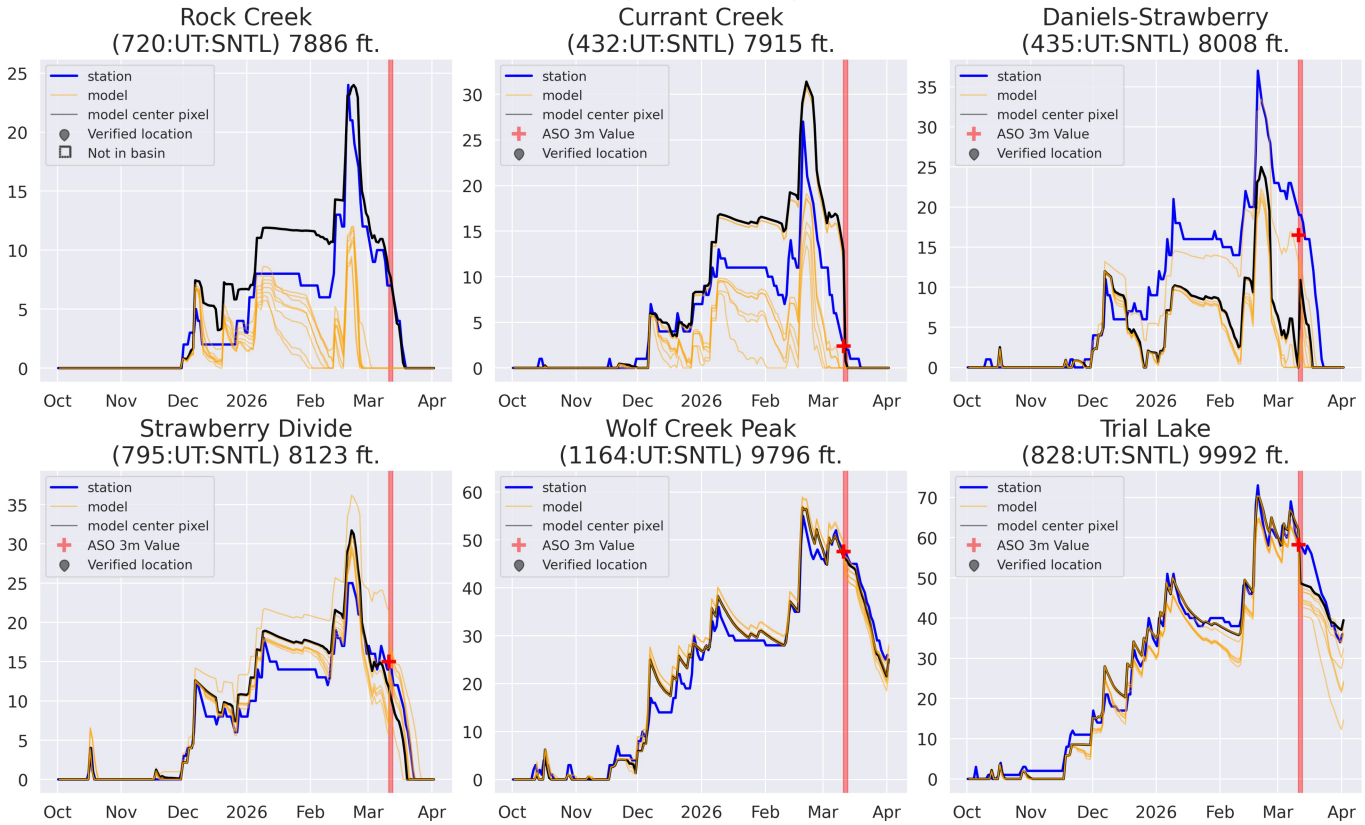


Fig.9 Comparison of modeled and measured Snow Depth [in.]. Comparisons of model pixels to measured station data are performed with the 9 nearest model pixels to give a more spatially complete view of model behavior.

UINTA HEADWATERS, UT

APRIL 1, 2026 MODELING REPORT

Model Description

Modeled data is generated using the M3 Works model framework BOREAS, which is the next generation of the Automated Water Supply Model (AWSM). Underlying forcing data is sourced from the High Resolution Rapid Refresh model (HRRR). BOREAS simulates the snowpack state using the physically based, distributed energy and mass balance snow model, iSnoBal.

This report is brought to you by the team at M3 Works: Mark Robertson, Micah Johnson, Micah Sandusky, Christina Aragon, Andrew Slaughter, and Ben Roberts-Pierel.

For more information on Airborne Snow Observatories, Inc. visit airbornesnowobservatories.com.

More information about M3 Works can be found at m3works.io.

Additional Details

Total Snow Water Equivalent values (TAF) on 2026-04-01

ELEVATION RANGE	TOTAL	CURRENT CREEK ABV DAM	DUSCHENE RIVER AT N FORK SIPHON	LAYOUT CREEK ABV DIVERSION DAM	PROVO RIVER ABV JORDANELLE RES	ROCK CREEK ABV STILLWATER RES	S F K ROCK CREEK AT DOCS DIV	SOLDIER CREEK ABV DAM	STRAWBERRY RIVER AT SOLDIER CK DAM
7000 - 7999	0.0	0.0	0.0	0.0	0.0	0.0	0.0	0.0	0.0
8000 - 8999	4.5	0.1	0.3	0.0	2.9	0.0	0.0	0.0	0.9
9000 - 9999	56.8	2.5	11.1	0.2	28.4	5.1	0.6	0.0	2.7
10000 - 10999	54.8	0.2	16.7	0.0	10.5	24.4	2.6	0.0	0.2
11000 - 11999	7.3	0.0	1.4	0.0	0.1	5.0	0.6	0.0	0.0
12000 - 12999	0.2	0.0	0.0	0.0	0.0	0.2	0.0	0.0	0.0

Total Snow Water Equivalent values (TAF) on 2026-04-01 cont.

ELEVATION RANGE	TWIN CREEK ABV DIVERSION DAM	WATER HOLLOW ABV DIVERSION DAM	WEST FORK ABV DIVERSION DAM	WOLF CREEK ABV DIVERSION DAM
7000 - 7999	0.0	0.0	0.0	0.0
8000 - 8999	0.0	0.0	0.2	0.1
9000 - 9999	0.0	0.3	4.8	1.2
10000 - 10999	0.0	0.0	0.2	0.0
11000 - 11999	0.0	0.0	0.0	0.0
12000 - 12999	0.0	0.0	0.0	0.0

UINTA HEADWATERS, UT

APRIL 1, 2026 MODELING REPORT

Accumulated Total Surface Water Input values (TAF) from 2026-03-15 to 2026-04-01

ELEVATION RANGE	TOTAL	CURRANT CREEK ABV DAM	DUSCHENE RIVER AT N FORK SIPHON	LAYOUT CREEK ABV DIVERSION DAM	PROVO RIVER ABV JORDANELLE RES	ROCK CREEK ABV STILLWATER RES	S FK ROCK CREEK AT DOCS DIV	SOLDIER CREEK ABV DAM	STRAWBERRY RIVER AT SOLDIER CK DAM
6000 - 6999	0.8	0.0	0.0	0.0	0.8	0.0	0.0	0.0	0.0
7000 - 7999	6.9	0.1	0.1	0.0	3.6	0.0	0.0	0.2	3.0
8000 - 8999	43.7	3.8	1.8	0.3	18.2	0.4	0.1	0.1	14.9
9000 - 9999	64.5	5.7	9.0	0.4	22.9	6.0	1.2	0.0	8.1
10000 - 10999	21.6	0.2	6.6	0.0	2.4	10.2	1.8	0.0	0.2
11000 - 11999	4.1	0.0	0.9	0.0	0.1	2.8	0.3	0.0	0.0
12000 - 12999	0.1	0.0	0.0	0.0	0.0	0.1	0.0	0.0	0.0

Accumulated Total Surface Water Input values (TAF) from 2026-03-15 to 2026-04-01 cont.

ELEVATION RANGE	TWIN CREEK ABV DIVERSION DAM	WATER HOLLOW ABV DIVERSION DAM	WEST FORK ABV DIVERSION DAM	WOLF CREEK ABV DIVERSION DAM
6000 - 6999	0.0	0.0	0.0	0.0
7000 - 7999	0.0	0.0	0.0	0.0
8000 - 8999	0.0	0.7	2.9	0.5
9000 - 9999	0.0	0.9	8.3	2.0
10000 - 10999	0.0	0.1	0.1	0.0
11000 - 11999	0.0	0.0	0.0	0.0
12000 - 12999	0.0	0.0	0.0	0.0

Change in Total Snow Water Equivalent values (TAF) from 2026-03-15 to 2026-04-01

ELEVATION RANGE	TOTAL	CURRANT CREEK ABV DAM	DUSCHENE RIVER AT N FORK SIPHON	LAYOUT CREEK ABV DIVERSION DAM	PROVO RIVER ABV JORDANELLE RES	ROCK CREEK ABV STILLWATER RES	S FK ROCK CREEK AT DOCS DIV	SOLDIER CREEK ABV DAM	STRAWBERRY RIVER AT SOLDIER CK DAM
6000 - 6999	-0.0	0.0	0.0	0.0	-0.0	0.0	0.0	0.0	0.0
7000 - 7999	-3.4	-0.0	-0.0	-0.0	-2.6	0.0	0.0	-0.0	-0.8
8000 - 8999	-39.0	-3.1	-1.7	-0.2	-17.2	-0.4	-0.1	-0.0	-12.6
9000 - 9999	-61.9	-5.3	-8.7	-0.4	-22.1	-5.9	-1.2	-0.0	-7.6
10000 - 10999	-21.4	-0.2	-6.4	-0.0	-2.3	-10.2	-1.8	0.0	-0.2
11000 - 11999	-4.3	0.0	-1.0	0.0	-0.1	-2.9	-0.3	0.0	0.0
12000 - 12999	-0.1	0.0	-0.0	0.0	0.0	-0.1	0.0	0.0	0.0

UINTA HEADWATERS, UT APRIL 1, 2026 MODELING REPORT

Change in Total Snow Water Equivalent values (TAF) from 2026-03-15 to 2026-04-01 cont.

ELEVATION RANGE	TWIN CREEK ABV DIVERSION DAM	WATER HOLLOW ABV DIVERSION DAM	WEST FORK ABV DIVERSION DAM	WOLF CREEK ABV DIVERSION DAM
6000 - 6999	0.0	0.0	0.0	0.0
7000 - 7999	0.0	-0.0	-0.0	0.0
8000 - 8999	-0.0	-0.6	-2.6	-0.4
9000 - 9999	-0.0	-0.8	-7.9	-2.0
10000 - 10999	0.0	-0.1	-0.1	0.0
11000 - 11999	0.0	0.0	0.0	0.0
12000 - 12999	0.0	0.0	0.0	0.0